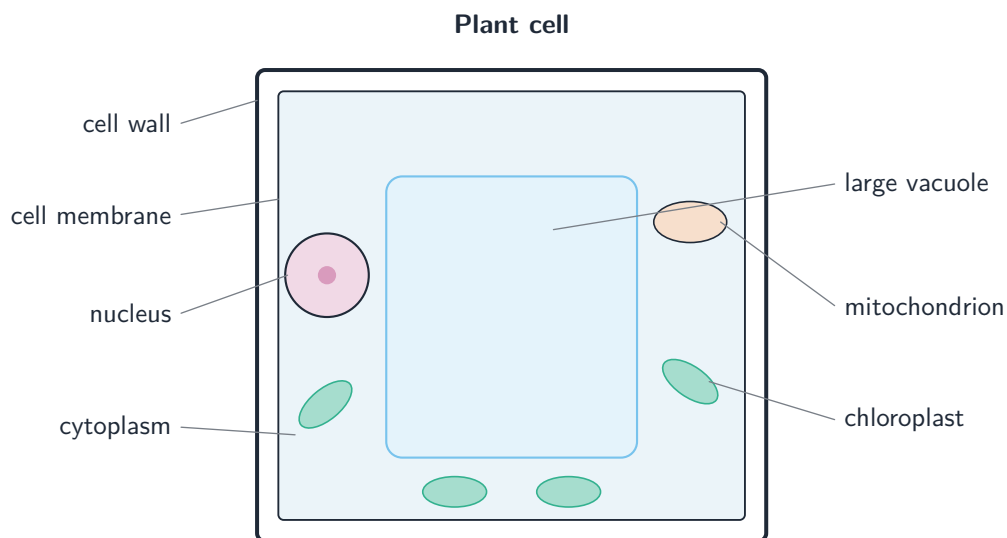


# Cell Structure and Function

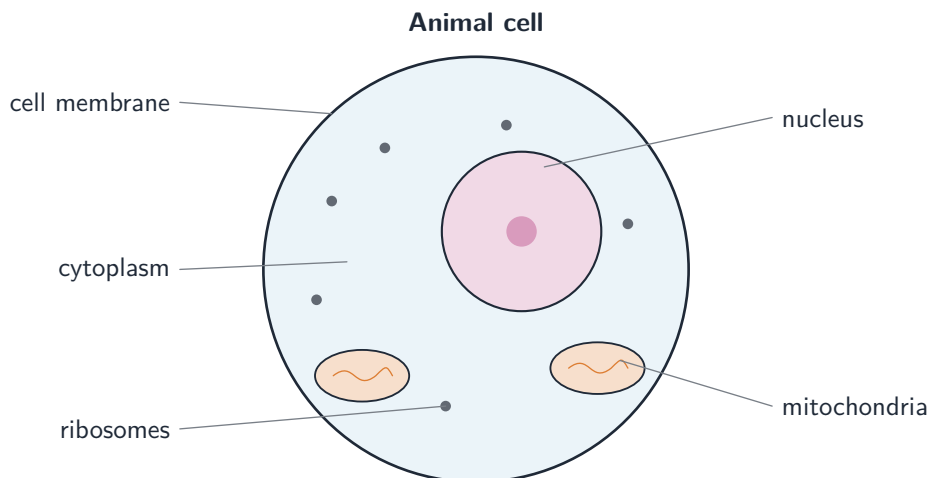
## AP Biology

### Organelles and the Endomembrane System

A eukaryotic cell divides its work among **organelles** 细胞器. The **endomembrane system** 内膜系统 is a connected set that makes, modifies, and ships molecules: the **nucleus** 细胞核 (holds DNA), rough and smooth **endoplasmic reticulum** 内质网 (protein and lipid synthesis), the **Golgi** 高尔基体 (modifies and packages), **lysosomes** 溶酶体 (digestion), and vesicles that carry material between them. **Mitochondria** 线粒体 (respiration) and **chloroplasts** 叶绿体 (photosynthesis) have their own membranes.



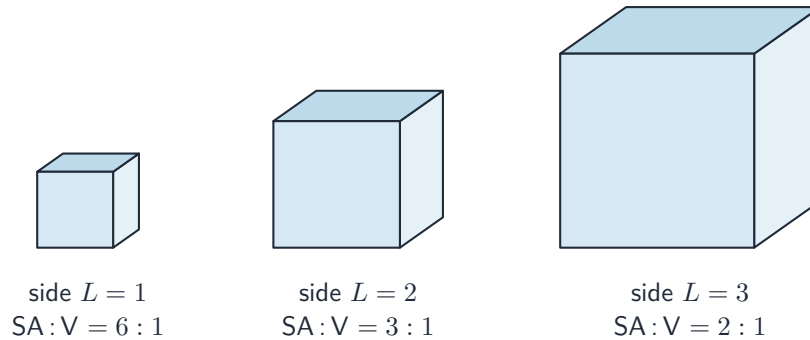
*A plant cell also has a cell wall, a large vacuole, and chloroplasts*



*A generalised animal cell and its organelles*

## Why Cells Stay Small

Cells stay small because of the **surface-area-to-volume ratio** 表面积与体积比. As a cell grows, its volume rises faster than its surface area, so its membrane cannot exchange materials fast enough for the interior. Staying small (or being flat or folded) keeps enough surface to serve the volume.



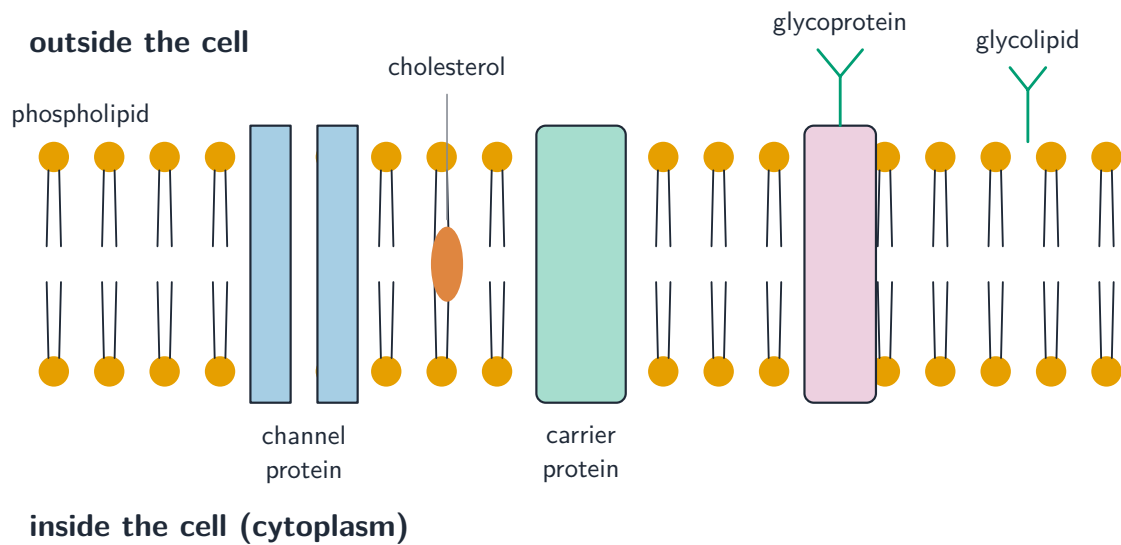
a bigger cube (or cell) has a **smaller** surface area : volume ratio

*The surface-area-to-volume ratio falls as a cell gets bigger*

**Worked example.** A cube-shaped cell  $2 \mu\text{m}$  on a side has surface area  $6 \times 2^2 = 24 \mu\text{m}^2$  and volume  $2^3 = 8 \mu\text{m}^3$ , so its surface-area-to-volume ratio is  $\frac{24}{8} = 3$ . Double the side to  $4 \mu\text{m}$ : surface area =  $6 \times 4^2 = 96$ , volume =  $4^3 = 64$ , ratio =  $\frac{96}{64} = 1.5$ . Doubling the size **halved** the ratio –the larger cell has far less membrane per unit of interior, which is why cells stay small.

## The Fluid Mosaic Model of the Membrane

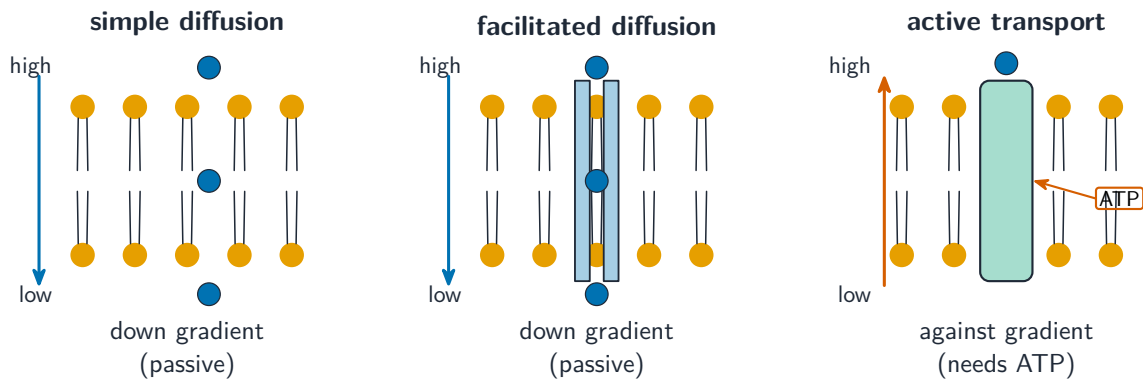
The cell membrane is a **phospholipid bilayer** 磷脂双分子层 –polar heads facing the water, nonpolar tails inside –studded with proteins. The **fluid mosaic model** 流动镶嵌模型 pictures it as a fluid sheet in which lipids and proteins drift. **Cholesterol** and the degree of unsaturation tune its fluidity.



*The fluid mosaic model of the cell membrane*

## What Can Cross the Membrane

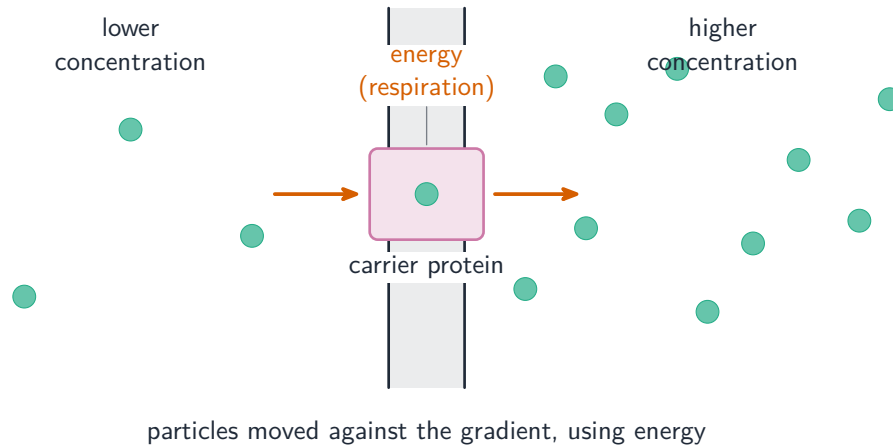
The membrane is **selectively permeable** 选择透过性. Small nonpolar molecules ( $O_2$ ,  $CO_2$ ) and water cross easily; large or charged/polar particles (ions, glucose) cannot pass the nonpolar core without help. This selectivity lets the cell control its internal environment.



*Three ways substances cross the membrane*

## Passive and Active Transport

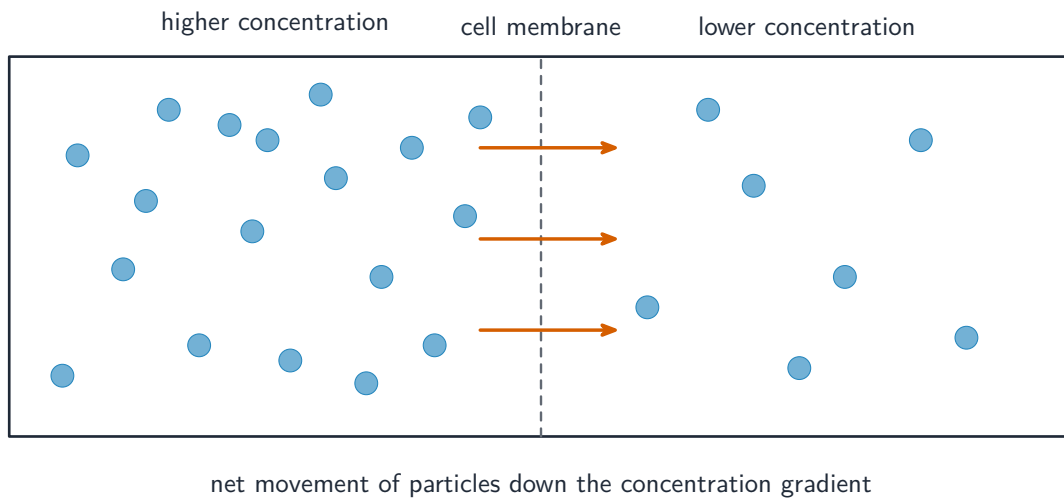
- **Passive transport** 被动运输 moves substances **down** their concentration gradient (high  $\rightarrow$  low) with **no energy** –diffusion 扩散.
- **Active transport** 主动运输 moves substances **against** the gradient (low  $\rightarrow$  high), requiring energy (ATP), via protein pumps like the sodium–potassium pump.



*Active transport moves particles against the gradient, using ATP and a carrier protein*

## Facilitated Diffusion

**Facilitated diffusion** 易化扩散 is passive transport through a membrane protein—a **channel** or **carrier** 载体—for particles that cannot cross the lipid alone. It still goes down the gradient and needs no energy, but its rate can saturate when all the proteins are busy.

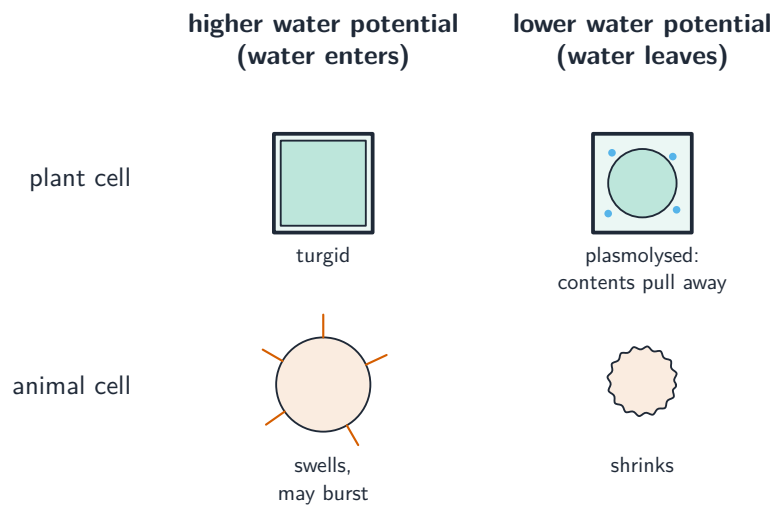


*Diffusion: particles spread from higher to lower concentration, down the gradient*

## Tonicity, Water Potential, and Osmoregulation

**Osmosis** 渗透 is the diffusion of water across a membrane. **Tonicity** 张力 compares solute concentrations: in a **hypotonic** 低渗 solution a cell gains water (may burst); in a **hypertonic** 高渗 one it loses water (shrinks); in an **isotonic** 等渗 one there is no net change. **Water potential** 水势 predicts the direction of water movement (water moves to lower water potential), and is the sum of a pressure term and a solute term:

$\Psi = \Psi_p + \Psi_s$ , where the solute potential  $\Psi_s = -iCRT$ . **Osmoregulation** 渗透调节 is how organisms control this balance.

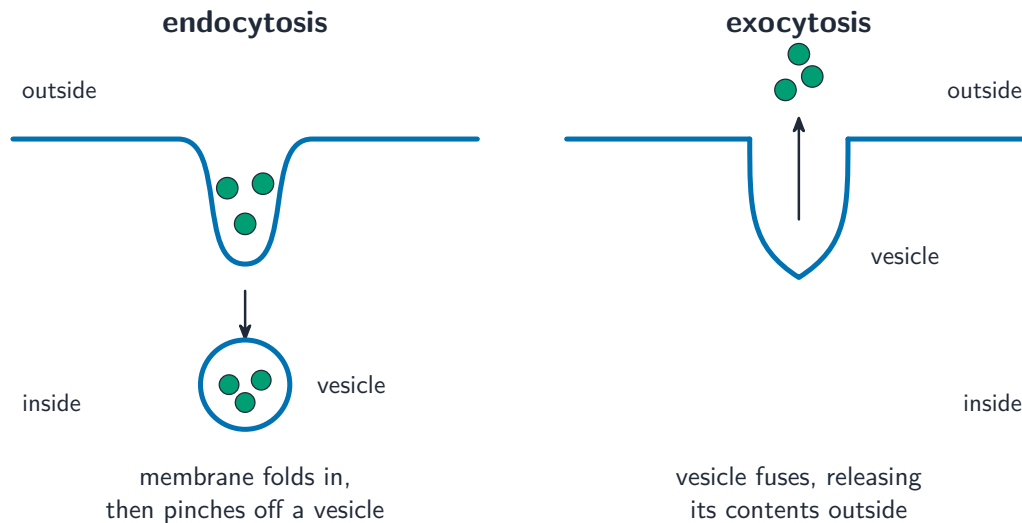


*How plant and animal cells respond to solutions of different water potential*

**Worked example.** For a 0.1 M sucrose solution ( $i = 1$ ) in an open beaker (so pressure potential  $\Psi_p = 0$ ) at 25 °C ( $T = 298$  K,  $R = 0.0831$  L · bar/mol · K):  $\Psi_s = -iCRT = -(1)(0.1)(0.0831)(298) \approx -2.48$  bar, so  $\Psi \approx -2.48$  bar. A plant cell whose interior is  $\Psi = -1.0$  bar sits in this solution: since the solution is **more negative**, water moves *out* of the cell into the solution, and the cell loses turgor.

## Mechanisms of Membrane Transport

Large materials move in bulk by **vesicles**: **endocytosis** 内吞 brings material **in** (the membrane engulfs it), and **exocytosis** 外排 sends material **out** (a vesicle fuses with the membrane). Both require energy and let cells import and secrete large molecules.



*Endocytosis brings material in; exocytosis releases it out*

## Compartmentalization Inside the Cell

Membranes create separate **compartments** 区室 so incompatible reactions can run at once and conditions (pH, ion levels) can be tuned locally. This organization boosts efficiency –the internal membranes also add surface area for reactions.

## The Origins of Cell Compartmentalization

The **endosymbiotic theory** 内共生学说 explains mitochondria and chloroplasts: they arose when a larger cell engulfed free-living prokaryotes that then lived inside it. The evidence –their own circular DNA, their own ribosomes, and double membranes –supports this shared evolutionary origin.

## Exam tips

- Use the two AP-formula skills: **surface-area-to-volume ratio** (why cells stay small) and **water potential**  $\Psi = \Psi_p + \Psi_s$  ( $\Psi_s = -iCRT$ ).
- Water moves toward the **lower (more negative) water potential**; predict swelling or shrinking from tonicity (hypo/hyper/isotonic).
- **Passive transport and osmosis need no energy** (down the gradient); **active transport** needs ATP (against the gradient).
- Distinguish diffusion, facilitated diffusion (a channel/carrier protein), and active transport.
- Explain membrane selectivity from the **phospholipid bilayer** —small non-polar molecules cross, large/charged ones need help.