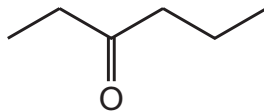
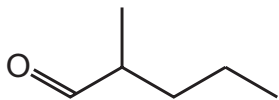
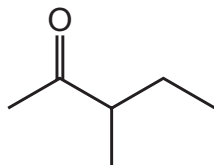
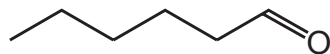


25 The diagrams show skeletal formulas of some isomers of  $C_6H_{12}O$ .



Which statement is correct?

- A 1 and 3 are chain isomers of each other and positional isomers of each other.
- B 2 and 3 are functional group isomers of each other and both have a chiral centre.
- C 1 and 4 are functional group isomers of each other and both have a chiral centre.
- D 2 and 4 are positional isomers of each other and functional group isomers of each other.