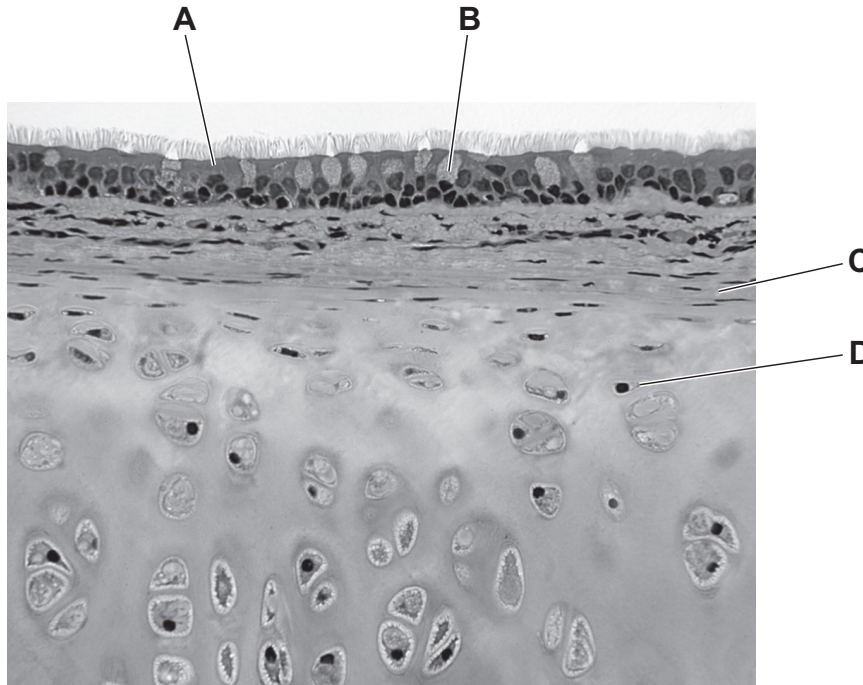


35 The photomicrograph shows a transverse section of part of the human gas exchange system.

Which row shows the correct name and function of one of the labelled structures in the photomicrograph?



	name	function
A	ciliated epithelial cell	traps particles
B	goblet cell	secretes mucus
C	cartilage	prevents collapse of trachea
D	smooth muscle	contracts to expand airways