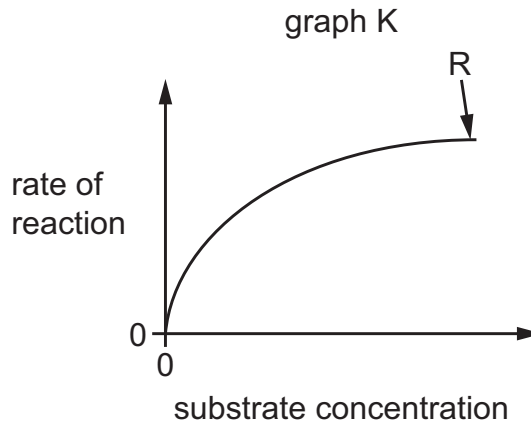
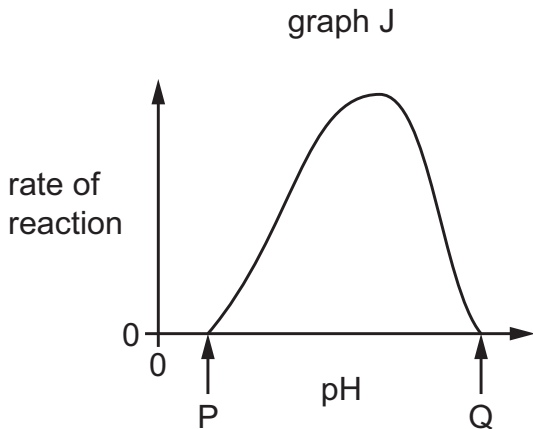


- 15 Graph J shows the effect of pH on the rate of an enzyme reaction. Graph K shows the effect of substrate concentration on the rate of an enzyme reaction.



A student wrote four statements about the graphs.

- 1 In graph J, the enzyme is denatured at point Q.
- 2 In graph J, the enzyme is inactive at point P.
- 3 In graph K, the rate of reaction is directly proportional to the substrate concentration.
- 4 In graph K, V_{\max} is reached at point R.

Which statements are correct?

- A** 1, 2 and 3 **B** 1, 2 and 4 **C** 1, 3 and 4 **D** 2, 3 and 4