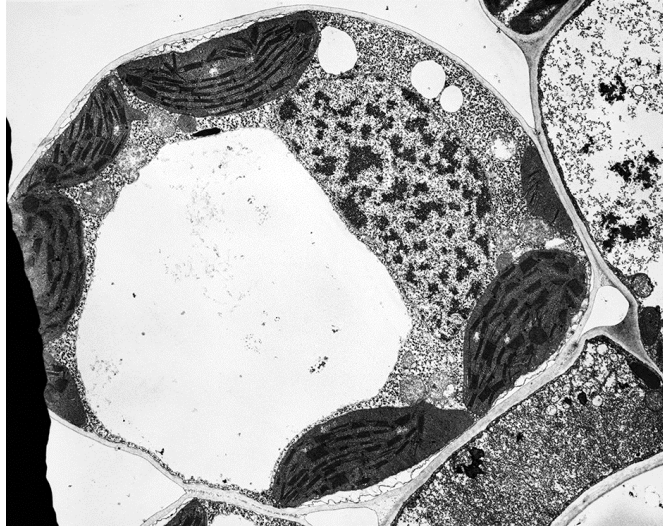


- 5 The electron micrograph shows a section through a cell.



What would be present in this type of cell?

	mitochondria	peptidoglycan cell wall	histone proteins
<b>A</b>	✓	✓	x
<b>B</b>	✓	x	✓
<b>C</b>	x	✓	x
<b>D</b>	x	x	✓

key

✓ = present

x = not present