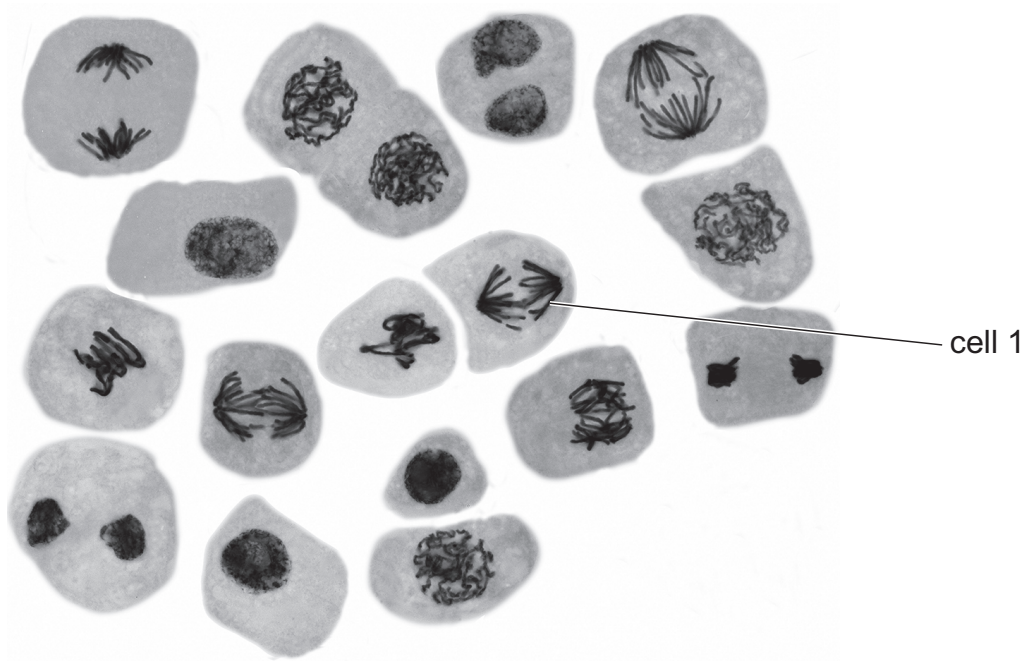


23 The photomicrograph shows 17 cells in different stages of the mitotic cell cycle.



Which row is correct for this photomicrograph?

|          | the role of a centromere in cell 1              | the proportion of the cells in the photomicrograph in telophase |
|----------|---|---|
| <b>A</b> | attaches daughter chromosomes to spindle fibres | > 0.2   |
| <b>B</b> | holds sister chromatids together                | > 0.2   |
| <b>C</b> | attaches daughter chromosomes to spindle fibres | < 0.2   |
| <b>D</b> | holds sister chromatids together                | < 0.2   |